

NON-EXECUTIVE DIRECTOR APPOINTMENT

HIGHLIGHTS

- **Highly experienced commercial and operations executive Karen O'Neill appointed to the board of Great Boulder**
- **Ms O'Neill has more than 30 years' experience in commercial and operations management as a governance and finance professional**
- **Ms O'Neill's commercial acumen and regulatory experience is an ideal complement to the technical skills of the other directors of Great Boulder**

Great Boulder Resources (“**Great Boulder**” or the “**Company**”) (ASX: **GBR**) is pleased to advise that Ms Karen O'Neill has been appointed to the board as a Non-Executive Director. A highly experienced governance and finance professional with extensive operational and executive experience in the resources sector, Karen's skills will complement the current board and strengthen the management team as the Company advances its flagship Side Well Gold Project.

Karen has more than 30 years' experience focused on resources, investment banking and corporate finance. Karen has executive experience in the Australian resources sector including her most recent roles as Managing Director of Kingsrose Mining Ltd and CEO of Koonenberry Gold Ltd. Karen holds an MBA and is a Fellow of the Governance Institute of Australia and a Graduate Member of the Australian Institute of Company Directors.

Great Boulder's Managing Director, Andrew Paterson commented:

“We are delighted to welcome Karen to the board of Great Boulder. Karen's skills and experience add strength and diversity to our corporate decision-making and governance processes and we look forward to continued success with Karen on the team.”

“While Great Boulder has always benefited from having a strong technical board of experienced geologists we've been looking for an ideal candidate to contribute additional skills, knowledge and experience to the boardroom, particularly from a commercial and regulatory perspective. Karen is an ideal fit in that regard and I'm very pleased to have her on our team.”

This announcement has been approved by the Great Boulder Board.

For further information contact:

Andrew Paterson

Managing Director

Great Boulder Resources Limited

admin@greatboulder.com.au

www.greatboulder.com.au

 [Follow GBR on LinkedIn](#)

Media

Lucas Robinson

Corporate Storytime +61 408 228 889

lucas@corporatestorytime.com

 [Follow GBR on Twitter](#)

About Great Boulder Resources

Great Boulder is a mineral exploration company with a portfolio of highly prospective gold and base metals assets ranging from greenfields through to advanced exploration located in Western Australia. The Company's core focus is advancing the Whiteheads and Side Well gold projects while progressing initial exploration at the earlier stage Wellington Base Metal Project located in an emerging MVT province. With a portfolio of highly prospective assets plus the backing of a strong technical team, the Company is well positioned for future success.

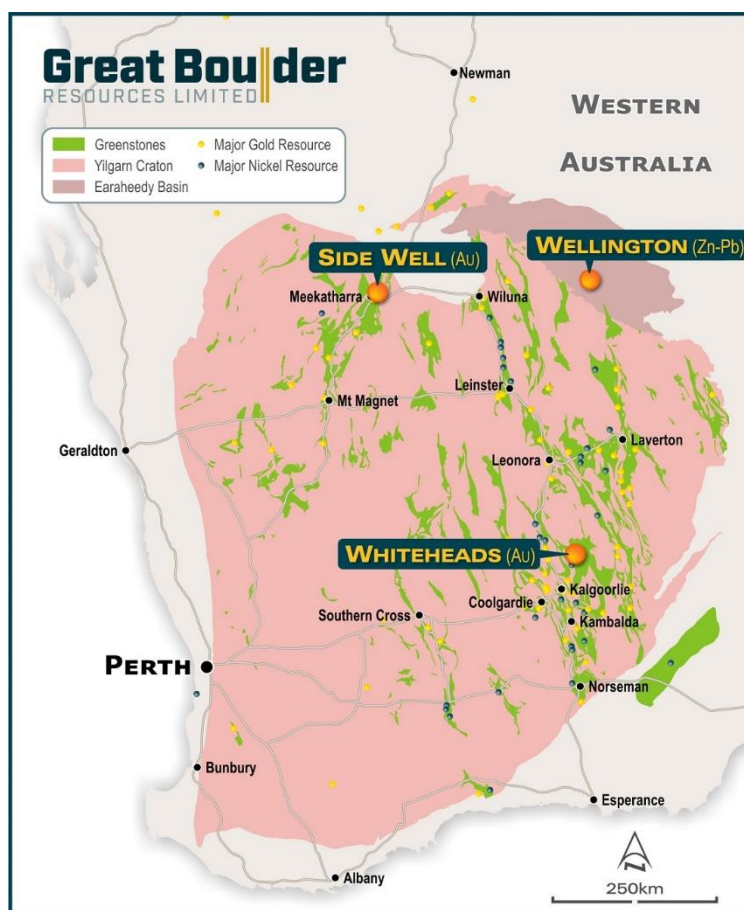


FIGURE 1: GREAT BOULDER'S PROJECTS